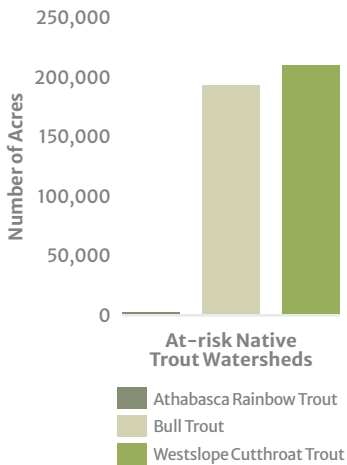




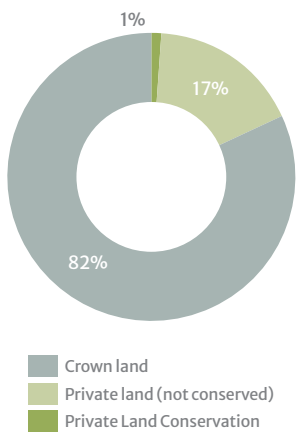
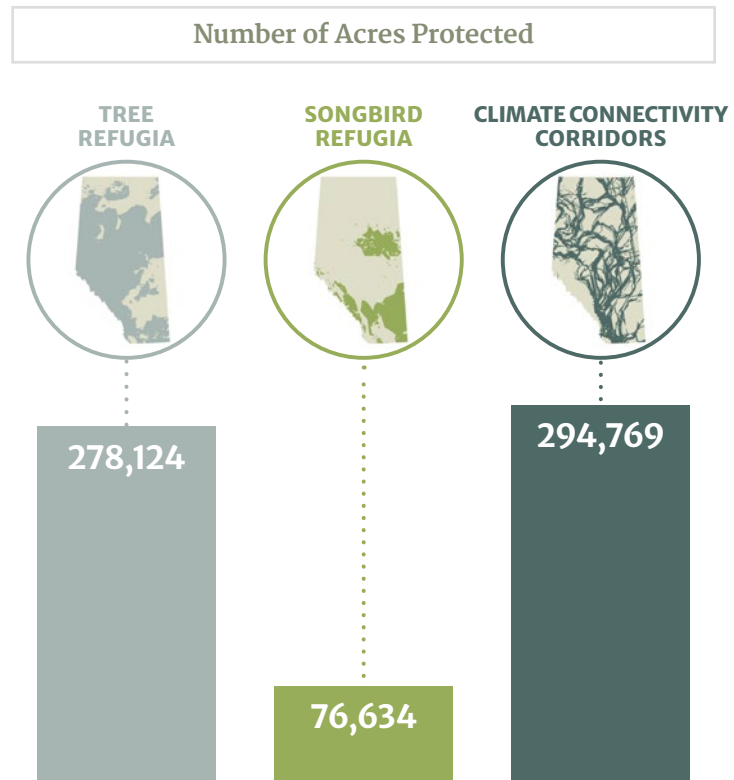
Biodiversity

Private land conservation provides a valuable tool for preserving more habitat for plants and wildlife to ensure biodiversity now and in the future.



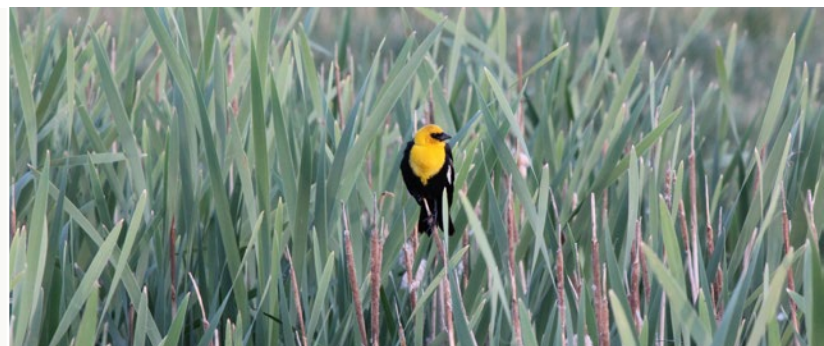
Alberta is home to three native trout species that are federally listed as Species at Risk. Habitat loss and degradation is one of the threats that continues to impact their populations. **Private land conservation protects land within watersheds where these populations are low to extirpated.**

Private land conservation protects land that has been identified as future bird and tree refugia under climate change scenarios. **As well, they protect nearly 300,000 acres of land that are predicted to connect current distributions of species to these future refugia.** Conserving these areas are vital for biodiversity now and into the future.



Winter is a particularly challenging season for survival of many species. **Preserving habitat within known winter ranges can help support populations.** Private land conservation protects nearly 150,000 acres of the winter range for bighorn sheep, deer, moose and elk, which accounts for just over 1% of the total area in the range or 7% of private land.

- Approximately 60–70% of pre-settlement wetlands in Alberta have already been lost in settled areas. Private land conservation provides a strong tool to protect these valuable biodiversity hotspots and already protects > 26,000 acres of wetland in Alberta.



This project was undertaken with the financial support of:
Ce projet a été réalisé avec l'appui financier de :